

Allied

PROPERTY GROUP

2,250 SF of PRIME OFFICE FOR LEASE

67 Mason Street, Greenwich



Building: 11,326 +/- s.f. Brick building with elevator

Space: 2,250 SF on the second floor

Parking: 6 On site spaces, 2 covered

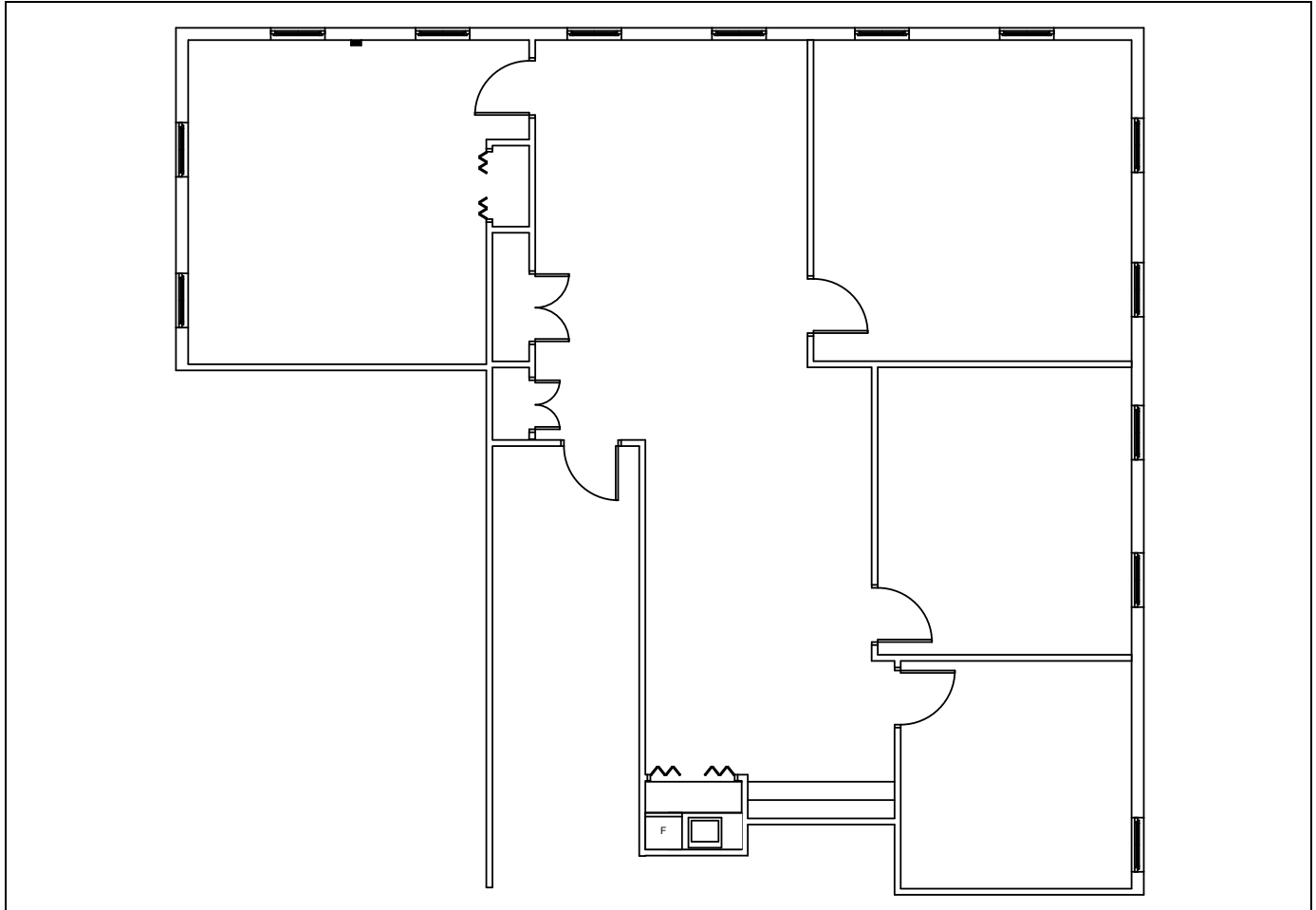
Price: \$55.00 PSF plus electric

Comments: Sunny corner office in Central Business District. Easy walk to Greenwich Avenue restaurants, shops & banks and Train

Exclusive Agent
Allied Property Group
Tom Torelli
203-661-5800 Ext. 1
tom@alliedpropertygp.com

Allied

PROPERTY GROUP



**67 Mason Street
2nd Floor**

Exclusive Agent
Allied Property Group
Tom Torelli
203-661-5800 Ext. 1
tom@alliedpropertygp.com